



Abode Doorway to Life Strategic Plan 2026- 2031

Easy Read Version



What is a strategic Plan?



A strategic plan is a plan for the future of the service.

2026 → 2031

It is a plan for a period of time:

This plan is for 5 years.



The plan looks at how to make our Service better.



We have to think about what people in Abode want now.
We have to think what people might want in the future.



We have to stick to the budget that the HSE give us.



We used our surveys and feedback to find out:

1. What was working well
2. What needs to change



We must follow the law.



Our Plan has five goals.
These are the things that
Abode wants to achieve.

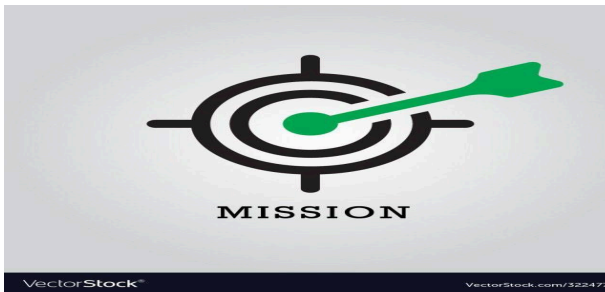
Abode's Vision, Mission and Values



A very important part of the plan is called the Vision, Mission and Values.



Vision is how Abode sees our future.



Mission is what Abode is doing for us.



Values are what is important to us.

Goal 1- People and Culture





Abode will make sure that you are at the centre of our plans. We will support you to plan for all parts of your life.



We will listen to your opinion.
Your rights are very important and will be respected



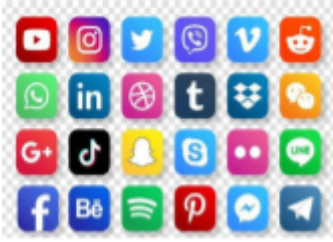
We will train staff to help them develop.
This will help them to best support you.



We want to make sure that staff know they are valued in Abode

Goal 2- Development of Services





We will tell people about Abode's services.



We will encourage people to join our service



We will talk to other organisations, the Government and the HSE.



We will listen to their ideas to help us have a better service

Goal 3- Regulatory Compliance





Abode will make sure all of your rights are upheld



We will make sure we follow the Law



We will make sure we meet all HIQA standards



We will make sure we meet all New Directions standards



We will make sure we meet all AHBRA standards

Goal 4- Fostering Partnerships





We will work with other people in other services to make Abode a better service

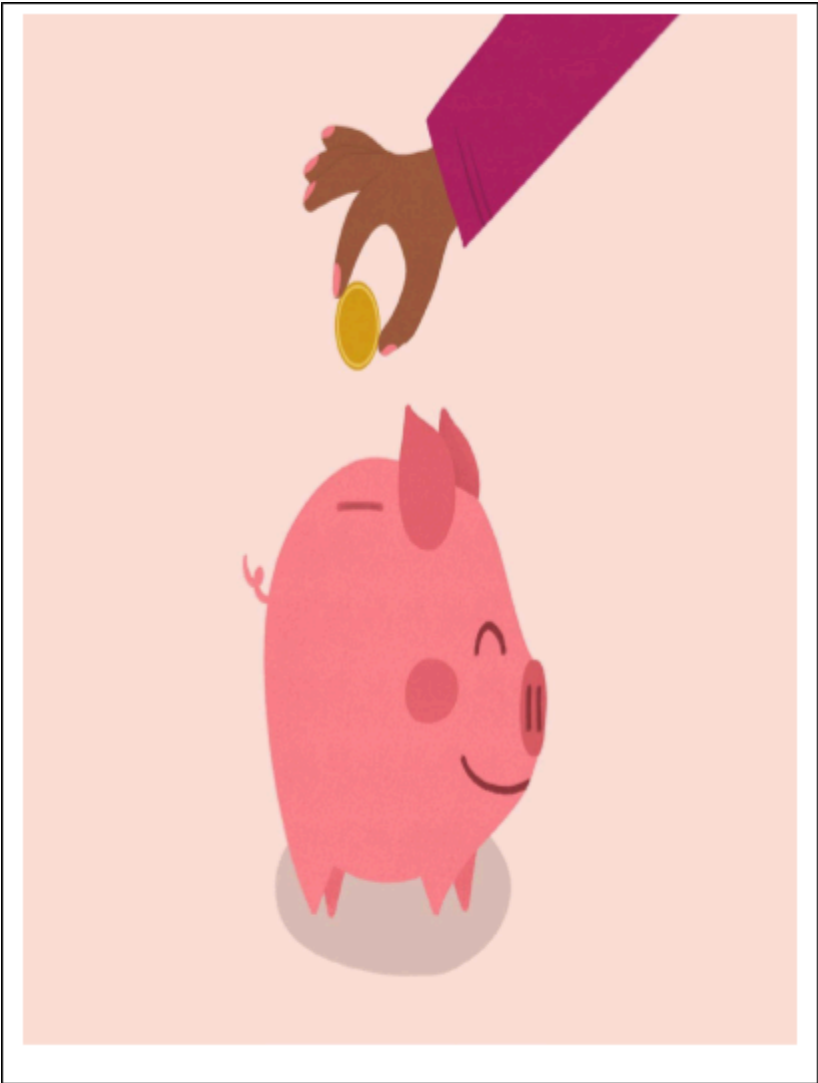


We will work with people in other organisations to see if we can all help each other.



We will ask organisations to spend some time volunteering with us

Goal 5- Financial Sustainability





We will work with the HSE to make sure we have enough money





alamy Image ID: 19397
www.alamy.com

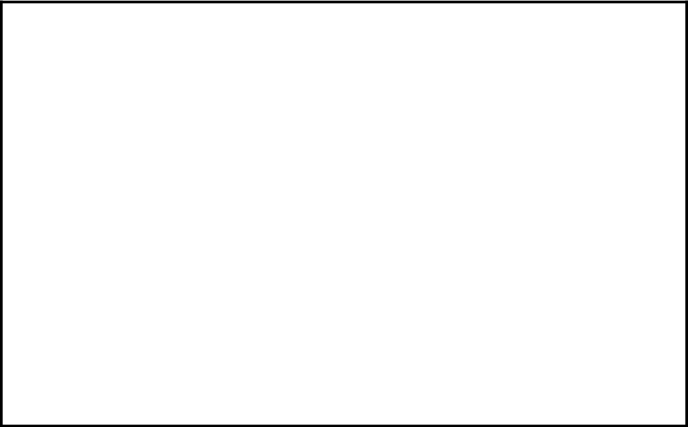
We will apply for grants



We will fundraise as individuals or as a group in Abode

Abode's Vision and Mission

 The logo for 'Community Life' features a purple circular base with the text 'Community Life' in white. Above the base, there is an illustration of a diverse group of people: a woman in a wheelchair, a man in a suit, and a woman in a patterned dress, standing in front of a house and a church.	<p>People living in an inclusive society.</p>
 The logo for 'Active Citizens' features a white rectangular base with the text 'Active Citizens' in blue. Above the base, there is an illustration of people engaged in various activities: a person running, a person playing a guitar, and a person reading.	<p>Support people to live their best lives</p>
	<p>People living as active citizens.</p>



Abode's Values

Person-Centred	The people we support will be at the core of our planning and delivery of quality services.
Equality	We will ensure that everyone is treated equal
Partnership	We will partner with other organisations.

Empowerment	We will encourage you to be an active citizen
-------------	---

